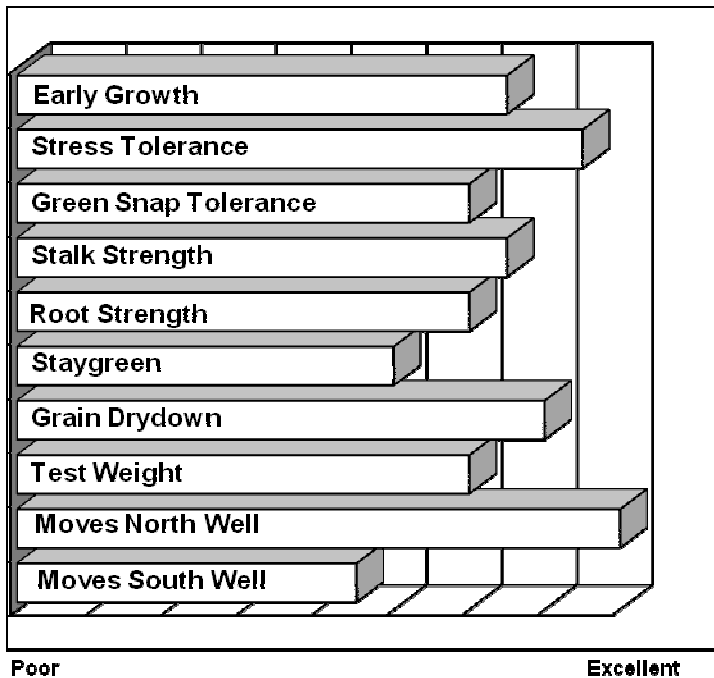




- **Tough, consistent performer across environments**
- **Very stable hybrid across the northern cornbelt east and west**
- **Medium height plants with medium low ears and good standability**
- **Moves north well as a fuller season option with early flower for maturity**
- **Consistent performance with outstanding stress tolerance**

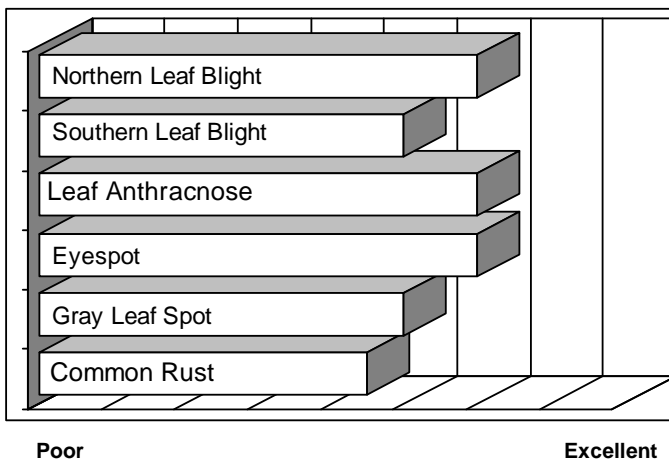
AGRONOMICS



PLANT CHARACTERISTICS

Plant Height	Medium
Ear Height	Medium Low
Leaf Attitude	Semi Upright
Ear Type	Girthy, Limited Flex
Kernel Rows	18-20
Cob Color	Red
Husk Cover	Medium
Ear Shank Length	Medium Short
Flowering for Maturity	Early
Black Layer for Maturity	Average

DISEASE TOLERANCE



Application	Excellent	Very Good	Good	Fair
MANAGEMENT				
High Input Management	X			
Low Input Management		X		
Corn after Corn	X			
No Till/Limited Tillage	X			
Delayed Harvest		X		
Silage Use			X	
PLANT POPULATIONS				
Less Than Optimum			X	
Optimum Population	28,000 – 34,000 plants/acre			
More Than Optimum	X			