

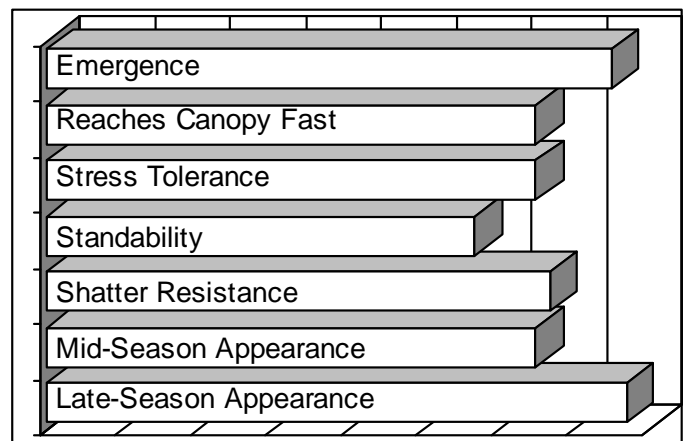


- "K" gene for Phytophthora Root Rot
- Moderate resistance to Brown Stem Rot
- Moderate SCN resistance package
- Earn premiums with Vistive lo-linolenic soybean markets

TRAITS

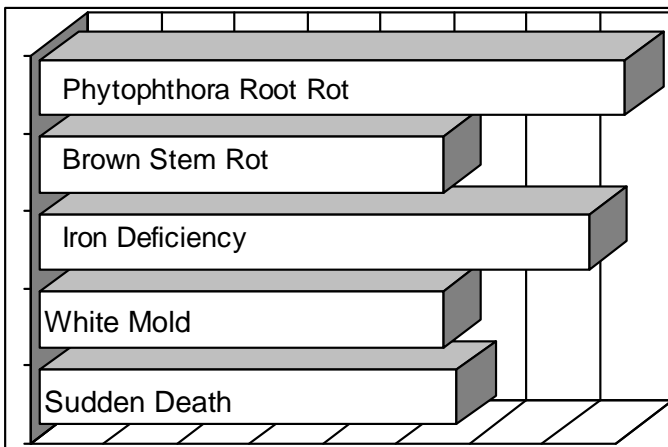
Plant Height:	Tall
Plant Width:	Medium
Flower:	Purple
Hilum:	Black
Pubescence:	Tawny
Pod:	Tan

AGRONOMICS



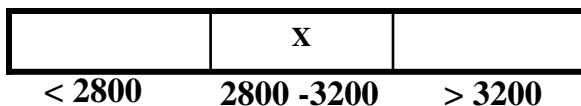
Poor Excellent

DISEASES



Poor Excellent

General Seed Size



Application	Excellent Choice	Good Choice	Fair Choice	Do Not Recommend
MANAGEMENT				
Irrigation		X		
No Till	X			
Wide Rows	X			
Narrow Rows		X		
PLANT POPULATIONS				
Higher Populations			X	
Lower Populations		X		
SOIL TYPES				
High Organic		X		
Clay & Variable	X			
Light and Sandy Soils	X			

