

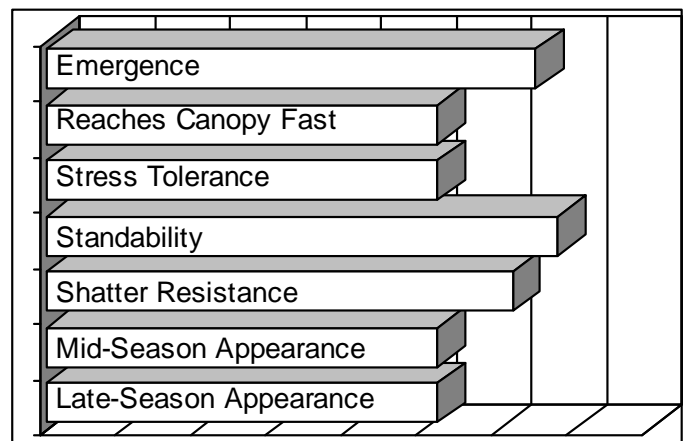


- "C" gene for Phytophthora Root Rot
- Very strong IDC tolerance
- Earn premiums with Vistive lo-linolenic soybean markets
- Moderate SCN resistance package

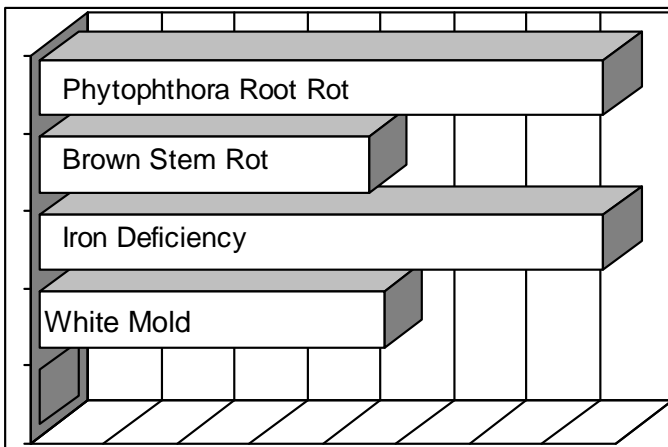
TRAITS

Plant Height:	Medium
Plant Width:	Medium
Flower:	Purple
Hilum:	Imp Black
Pubescence:	Gray
Pod:	Brown

AGRONOMICS



DISEASES



Poor

Excellent

Application	Excellent Choice	Good Choice	Fair Choice	Do Not Recommend
MANAGEMENT				
Irrigation	X			
No Till		X		
Wide Rows		X		
Narrow Rows	X			
PLANT POPULATIONS				
Higher Populations	X			
Lower Populations			X	
SOIL TYPES				
High Organic		X		
Clay & Variable	X			
Light and Sandy Soils			X	

General Seed Size

