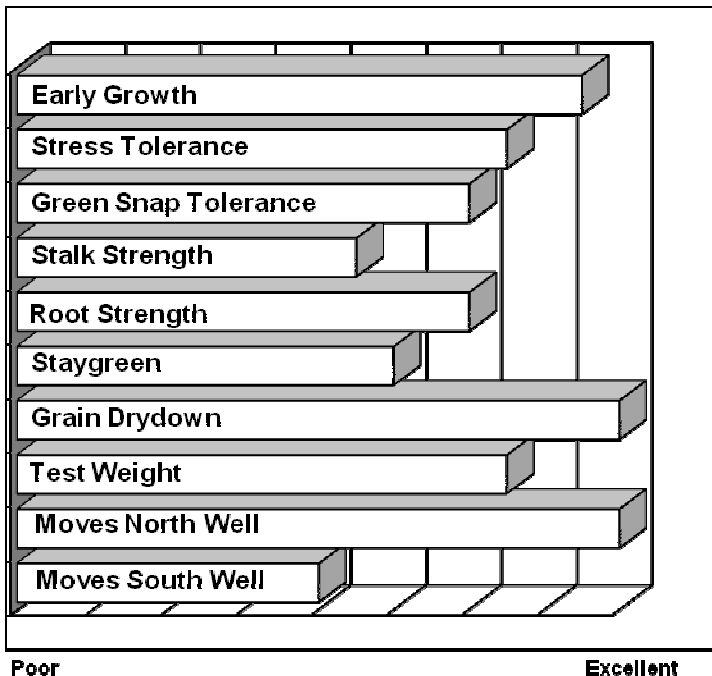




- **Hard-to-beat yield potential for this maturity**
- **Very consistent ear development with stable top end yields**
- **Grain sets up and finishes quickly, allowing good northern movement**
- **Moderate flex ears with very good grain quality and high test weight**
- **Efficient grain producer, manage for potential late season stalk pressure**

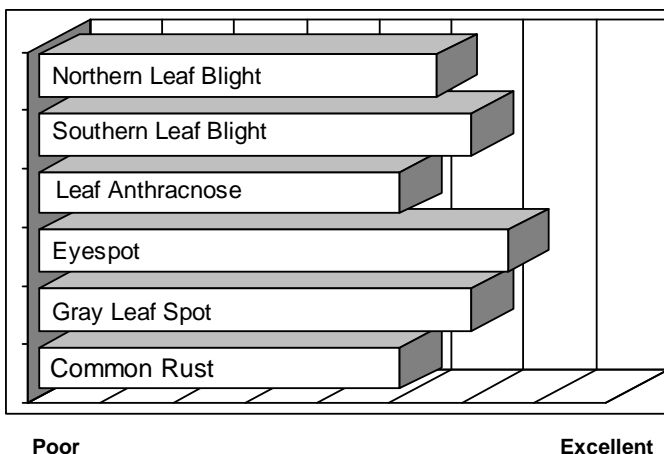
AGRONOMICS



PLANT CHARACTERISTICS

Plant Height	Medium
Ear Height	Medium
Leaf Attitude	Semi Upright
Ear Type	Moderate Flex
Kernel Rows	16
Cob Color	Red
Husk Cover	Medium
Ear Shank Length	Medium Short
Flowering for Maturity	Early
Black Layer for Maturity	Early

DISEASE TOLERANCE



Application	Excellent	Very Good	Good	Fair
MANAGEMENT				
High Input Management	X			
Low Input Management				X
Corn after Corn		X		
No Till/Limited Tillage	X			
Delayed Harvest				X
Silage Use			X	
PLANT POPULATIONS				
Less Than Optimum			X	
Optimum Population	30,000 – 36,000 plants/acre			
More Than Optimum		X		